

ELIGIBILITY STATEMENT

This Eligibility Statement provides supporting documentation for Western Australian forest abatement projects seeking to demonstrate eligibility for recognition of forest sink abatements under the Kyoto protocol.

Date of Production: 03 April 2009

Name of Landowner(s): EXAMPLE HOLDINGS PTY LTD

Lot Number: 1234

Certificate of Title number: 123/456

Deposited Plan (DP) number: 001122

Address of Subject Lot: Test

Telephone: 9387 0330

Email: srss@landgate.wa.gov.au

Postal address of Landowner: Leeuwin Centre
65 Brockway Road
Floreat
Western Australia
6014

Note: the future content of this Eligibility Statement may be revised to conform with any regulations included in the Australian Government's Carbon Pollution Reduction Scheme.



SITE DESCRIPTION

Current aerial photograph of subject land ABCDEF 01234 with property boundaries overlaid.



Figure 1: Current aerial photograph

Map Details

Image: aerial photograph
 Pixel size: 0.5 metre
 Capture date: Nov Dec 2006

Image Coordinates	Latitude / Longitude	Easting / Northing (Zone 50)
North-east corner	-30.5903, 117.5011	548037E, 6615694N
South-west corner	-30.6091, 117.4812	546126E, 6613620N

Geographic Location

Locality:
 Shire/District: Koorda
 State: Western Australia



KYOTO 1990 ELIGIBILITY IMAGE

Landsat satellite imagery (25m pixel size) captured in 1989 with the boundary of property ABCDEF 01234 overlaid.

This image may be used to demonstrate that the area to be planted complies with the Kyoto Protocol's requirement that the subject land must have been clear of forest on 31 December 1989 to be eligible as reforestation project.

The current aerial photograph (figure 1) and 1989 perennial vegetation map (figure 3) may also be used as supporting data.

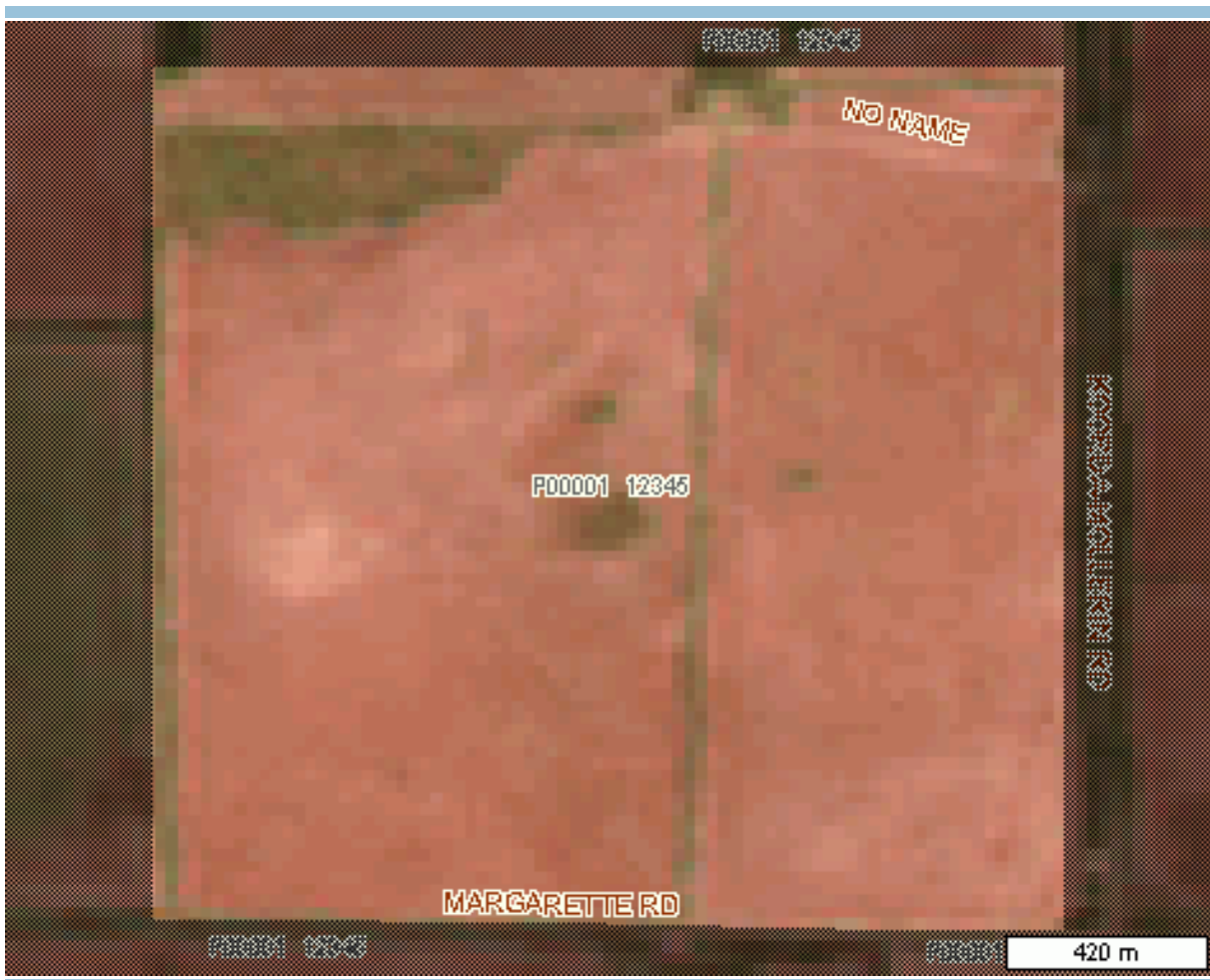


Figure 2: Kyoto 1990 Eligibility Image

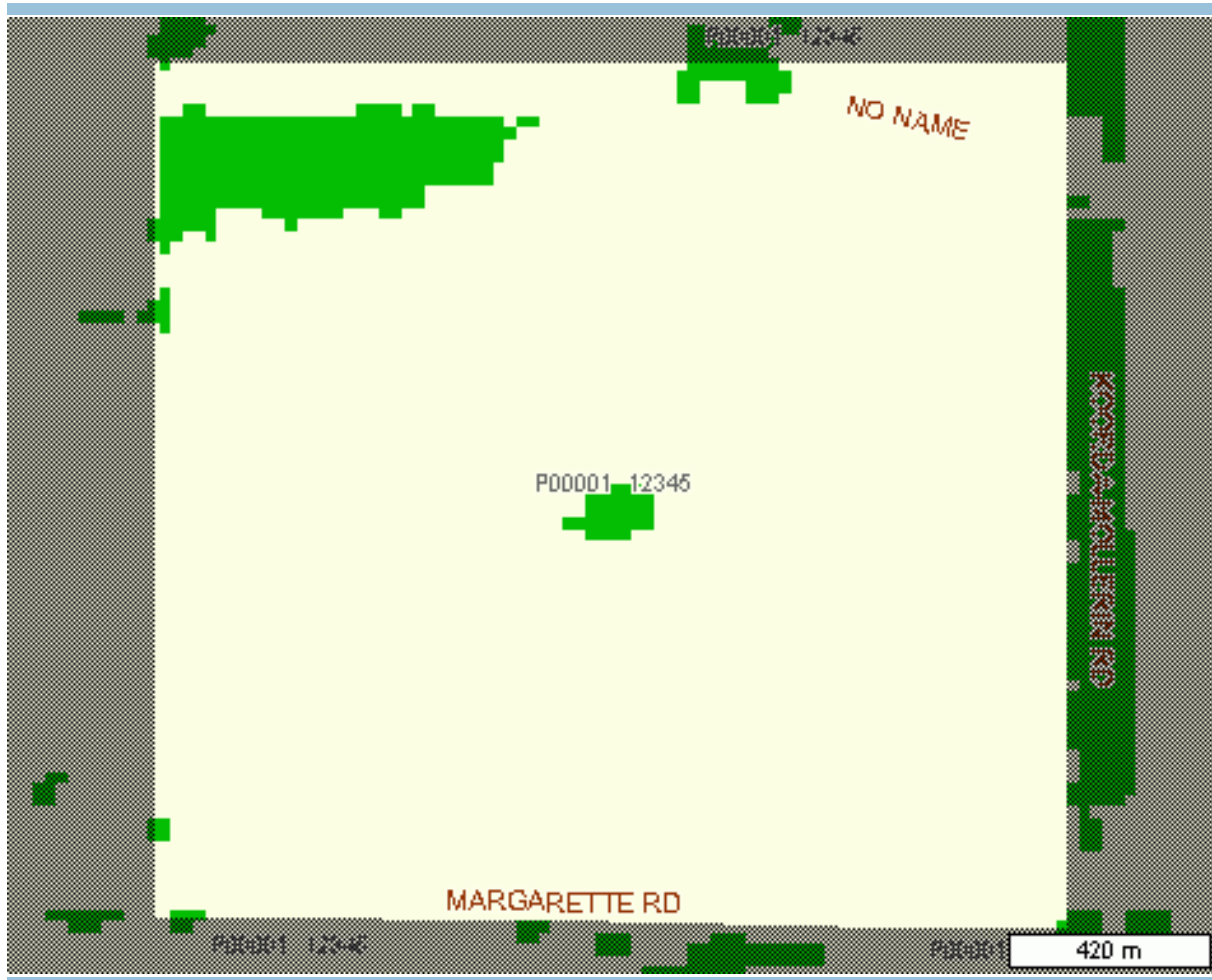
Map Details

Image:	Landsat TM
Bands:	1, 4 and 6
Pixel size:	25 metre
Capture date:	December 1989



1988 PERENNIAL VEGETATION MAP

Land Monitor 1988 perennial vegetation map with property boundaries overlaid. This map may be used to confirm the extent of perennial vegetation on 31 December 1988.



Map Details

Image: 1988 Perennial Vegetation Cover
 Pixel size: 25 metre
 Produced by: Land Monitor Project

Legend

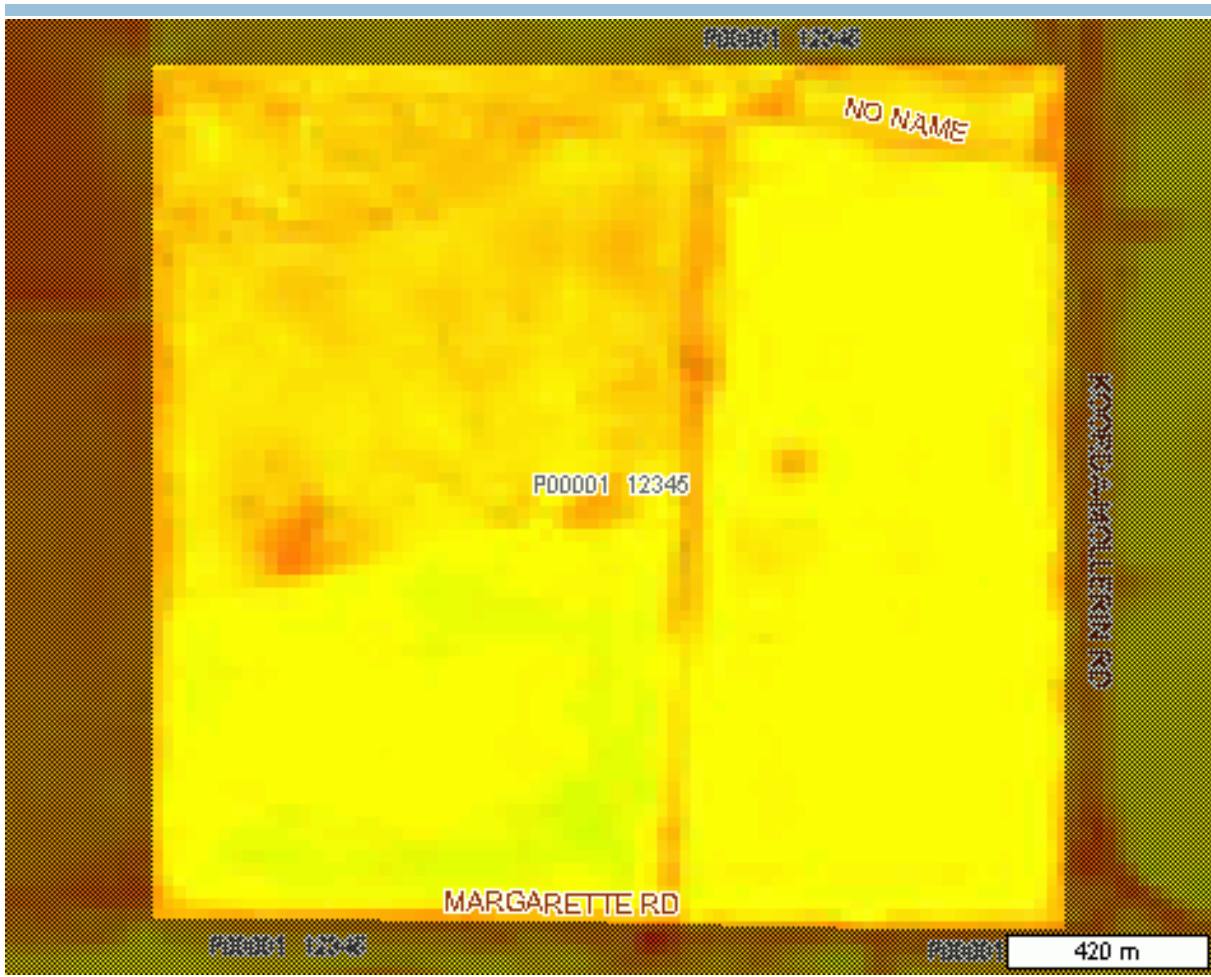
- perennial vegetation cover - 1988
- town / settlement
- city / town
- cadastre
- roads - primary.
- roads - other

Note: The information contained in this vegetation map is necessarily based in part upon various assumptions and predictions. The Land Monitor Project accepts no responsibility for inaccuracies in this vegetation map and a person relying on this information does so at their own risk.



GREENNESS AVERAGE

Greenness average map with property boundaries overlaid. The Greenness Average is a measure of the average vegetation greenness between 2000 and 2007. It provides information regarding vegetation type, land management practices and soil fertility. It was developed using archived Landsat TM and ETM satellite imagery and has a resolution of 25m pixels.



Map Details

Image: Greenness Average, 2000 to 2007
Pixel size: 25 metre
Produced by: Landgate

Legend



SITE CHARACTERISTICS AND POST-1990 PLANTINGS

Site Characteristics

Soil description

Gently undulating to rolling terrain with some ridges and uneven slopes and with the variable presence of lateritic mesas and buttes; some granitic rock outcrops: chief soils are hard alkaline red soils (Dr2.33), (Dr2.63), (Dr2.73) with variable areas of (Dy) soils such as (Dy3.43), (Dy3.83), (Dy3.42), and (Dy3.41). Associated are some (Dr2.22) soils; patches of soils of unit Ms8; and some (Gn2.12) soils on slopes especially in the more northern and eastern areas of the unit. Occurs on sheet(s): 5

Data source: 'Digital Atlas of Australian Soils', Bureau of Rural Sciences (1998).

Rainfall

5 year average (2003 to 2007): 356mm

10 year average (1998 to 2007): 337mm

20 year average (1988 to 2007): 335mm

Annual rainfall totals 1980 - 2007

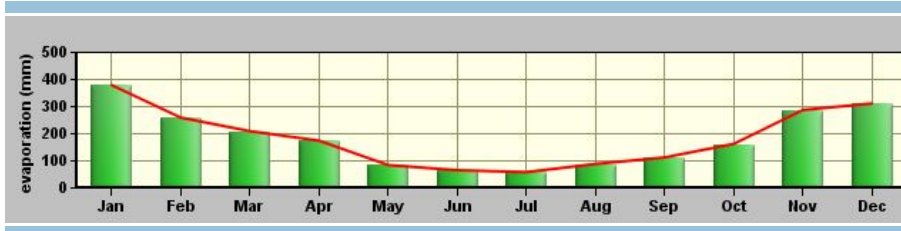


Data source: 'Australian Annual Rainfall Gridded Data 1900 to 2007', Bureau of Meteorology (2008)

Pan evaporation

Annual average: 2164mm

Monthly pan evaporation averages 1990 - 2006



Data source: Bureau of Meteorology (2008)



Post-1990 Planting: Project Information

Affirmed Statement for Kyoto Compliance: The subject project is a forest of trees with a potential height of at least two metres and a potential crown cover of at least 20%. The plantings within this project are in patches greater than 0.2 hectares in area that have minimum width of 10 metres.

The description of the plantings provided by the applicant is:

Deposited Plan XXXXX (Lot No. XXXX)

Project Information

Species - Eucalyptus loxophleba ssp. lissophloia

Date Planted - Planting to commence 1 July 2009

Registered Carbon Right

A Western Australian Carbon Right is not registered on 123/456.

